

PRAGATI PUBLIC SR. SEC. SCHOOL

Ujjawal Vihar, Baran Road, Kota

SUMMER VACATIONS HOLIDAY HOMEWORK

Class- IV

ENGLISH

1. Write about the tree and plants you see in the parks in your city and few lines about your favourite tree or plant. Does it have flowers ? When do these flowers bloom ?
2. Write a paragraph on your favourite room of your house? Why do you like it ?
3. Create a collage or drawing that shows a proper noun (of person/place), a common noun (object) and a collective noun (group of animals / people / object). Label each one clearly.

HINDI

1. सुलेख पुस्तिका में पृष्ठ सं. 3 से 15 तक का कार्य सुन्दर लेख में करें।
2. गर्मी के दिनों में आप बेजुबान जानवरों की सहायता किस प्रकार करेंगे ? अपने विचार लिखिए।
3. व्याकरण पुस्तिका से पृष्ठ सं.-101 सं अनुच्छेद 'स्वच्छता –स्वस्थ जीवन की आवश्यकता' लिखिए।

MATHS

- Q1. Write the year of birth of all your family members along with yours. Arrange these years in the ascending order.
- Q2. In each of the following, there is one incorrect number. Find the incorrect number and circle it.
 - a) Count in tens: 1400, 1500, 1650, 1700
 - b) Count in hundreds: 13457, 13557, 13657, 13477, 13857.
 - (C) Count in thousands: 38902, 39802, 40902, 41902, 42902.
- Q3. Use the digits 5, 2, 9 and 1 to form the largest 4-digit number and the smallest 4-digit number. What is the difference between them?
- Q4. Ria says that 9,999 is a 5-digit number. Do you agree with her? Why or why not?
- Q5. You went shopping with Rs. 1,000. You bought a toy for Rs. 375 and a boy for Rs. 265. How much money do you have left?

Q6 Case study -The City Library

The City library keeps a record of books in different sections -

- Fiction Books - 12,345
- Science Books - 8,950
- Math Books - 6,785
- History Books - 9,120

- a) How many books are there in total in the Science and Math sections?
- b) The library wants to keep 40,000 books in total. How many more books does it need?

Q7. Case study - School Picnic Expenses

Students of class IV are going on a picnic. The class teacher made the following expenses-

- Bus fare - Rs. 2,350
- Snacks- Rs.1,275
- Entry tickets- Rs. 1,120
- Games and prizes - Rs. 980

- (a) What is the total amount spent on picnic ?
(b) If 25 students went on the picnic, how much did each student pay if the total cost was equally shared ?

Q8. Case study - Toy Factory Production

A toy factory makes different types of toys in a month.

- Cars: 18,765
- Dolls: 21,340
- Balls: 14,230
- Block: 19, 845

- (a) Which toy was produced the most?
(b) Round the number of Cars and Balls to the nearest hundred and find their total.

Q9. Who am I?

I am a 5-digit number.

My thousands digit is 6.

My tens digit is double the hundred's digit.

My ones digit is 5.

My number is between 40,000 and 50,000.

What number am I?

- Q10. A number is greater than 6,000 but less than 6,100. It ends in a 5 and has a 0 in the tens place.
What is the number ?

SCIENCE

How much do you know about the plants around you? Tick the correct choice:

1. Which flower is seen in the hand of Goddess Lakshmi?
(a) Lotus (b) Rose (c) Marigold (d) Lily
2. The leaves of which plant give us an orange-red dye that we put on our palms?
(a) Neem (b) Henna (c) Beetroot (d) Carrot
3. The wood of which tree is used to make cricket bats?
(a) Banyan (b) Mango (c) Teak (d) Willow
4. The stems of which plant give us juice from which sugar is made.
(a) Grass (b) Sugarcane (c) Beetroot (d) Mustard
5. Which plant is considered sacred and is worshipped in many homes?
(a) Tulsi (b) Neem (c) Betel (d) Baniyan
6. Which trees are decorated with gifts and lights on Christmas?
(a) Fir (b) Pine (c) Neem (d) Mango
7. The leaves of which plant are used as plates in some parts of India?
(a) Coconut (b) Banana (c) Jackfruit (d) Grass
8. Which plant with thick-leaves yields colourless gel on cutting?
(a) Rose (b) Aloe vera (c) Spinach (d) Jasmine

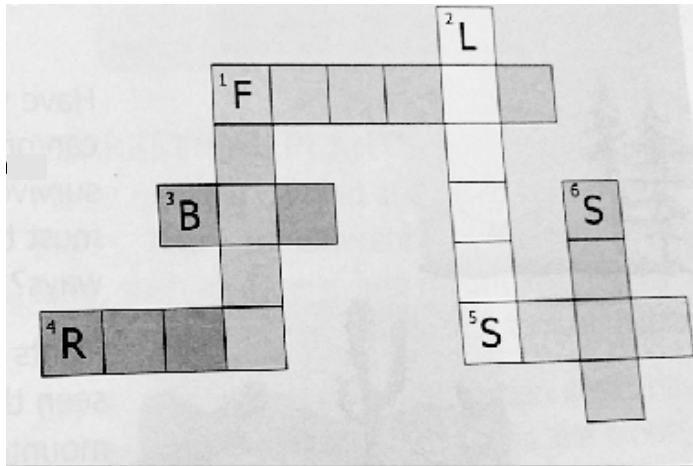
9.Solve the crossword with the help of the given clues:

Down

- 1 Flower changes into this.
2. Kitchen of plant.
6. It helps in transporting material from roots to leaves.

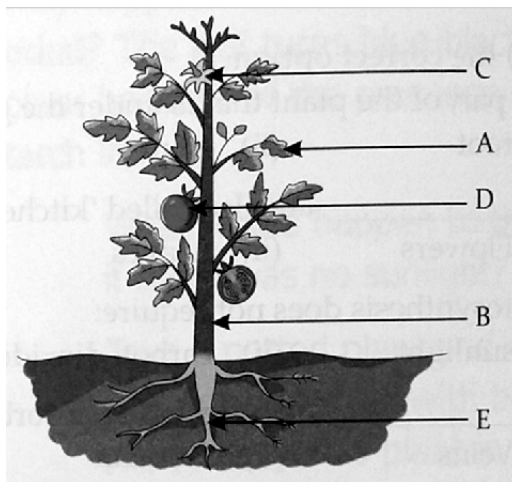
Across

1. Colourful part of a plant.
3. It grows into a flower.
4. Part of plant below the ground.
5. It grows into a new plant.



II. Look at the image given below and answer the questions that follow:

- (a) Identify the part of a plant which performs photosynthesis.
 (i) E (ii) D (iii) A (iv) B
- (b) The part that carries water to all the parts of a plant:
 (i) B (ii) C (iii) D (iv) E
- (c) The part of a plant which fixes the plant firmly to the ground:
 (i) A (ii) B (iii) E (iv) Any of these
- (d) Seeds are found in:
 (i) B (ii) C (iii) D (iv) E

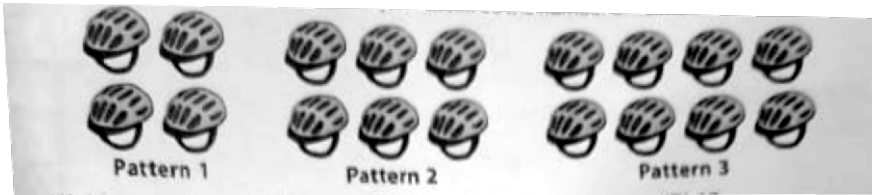


SOCIAL STUDIES

1. On the political world map mark the continents (given on pg. no. 9)
2. Find out the name of the first Indian woman who scaled Mount Everest and write five lines about her.
3. Stick the pictures of the flag of any five neighbouring countries.
4. Name some important cities that are located in Ganga Basin.
5. Stick the pictures of any two famous food items of Punjab, Bihar and West Bengal

MAB

1. Study the given figure pattern carefully. What will be the number of helmets in pattern 7?



- a) 16 b) 18 c) 20 d) 17

2. Find the missing number , if a certain rule is followed either row -wise of column-wise

- a) 20
b) 18
c) 11
d) 15

6	7	42
3	9	27
5	4	20
9	2	?

3. Find the missing figure in the given figure pattern.

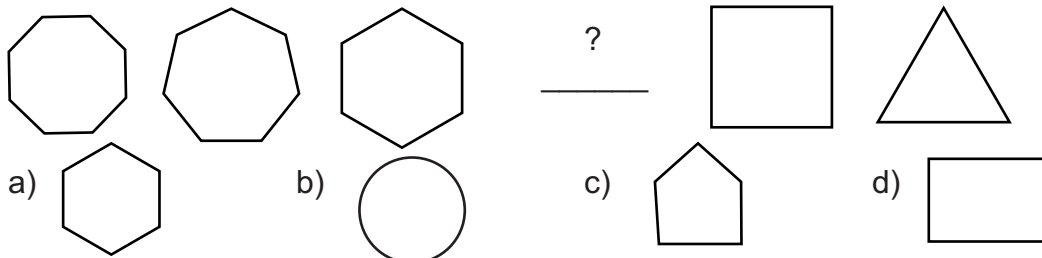


4. Find the missing number in the given number pattern.



- a) 110 b) 120 c) 135 d) 115

5. Find the missing figure in the given figure pattern.



G.K.

Read the newspaper daily Paste any five important news cutting in G.K. notebook.

COMPUTER

1. 'IPO' in my Daily life: Write three simple example of the IPO cycle in your life. (e.g - Brushing teeth) (a) Input - Brush, Paste (b) Process - Brushing (c) Output - Clean teeth). You can write sentence with or without drawing.
2. Draw or paste your favourite printer (any one) (e.g- Inkjet / laser/Thermal/Dot- matrix) and write about -
 - I) What is it called ?
 - II) What is it used for ? (one line)
 - III) Where you may find it ? (home, shop, etc.)
3. Design your own computer folder - Draw a big folder icon on paper. Inside the folder, draw or paste four file icons (like a picture, video etc.) Give each file a name (like : my vacation photo, my favourite songs etc.) , then write - What kind of files they are ? (e.g- picture, song, etc.) and what the folder is named?